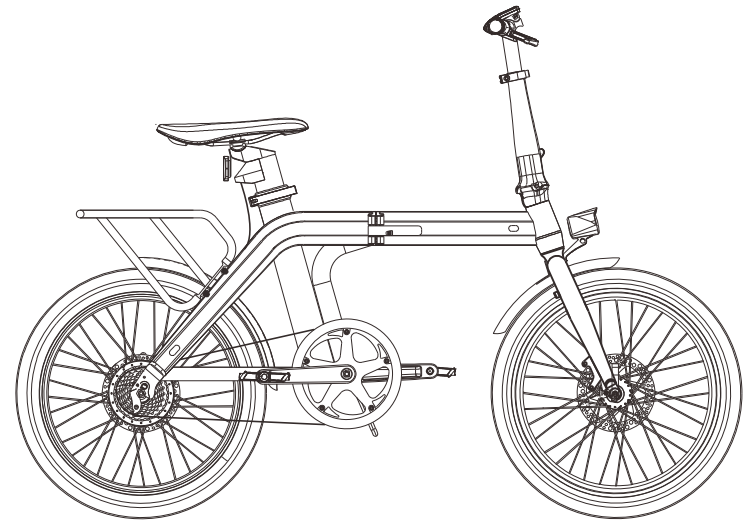


S3Series
Electric Assist Bicycle

User Manual

- ⌚ Please read the manual carefully before riding.
- ⌚ Please store the manual well in case needed in future.



MOBOT PTE. LTD.

62 Ubi Road 1 Oxley Bizhub 2 #03-23
Singapore 408734
Tel: +65 6538 8216
Email: info@mobot.sg
Website: www.mobot.sg
Co reg: 200717700W

Version NO.202109

About Manual

Thanks for purchasing our products.

To make sure that you can use the product in correct way,
please completely read the manual in patience before driving it.

This manual contains important safety use instructions.

WARNING

The appliance is not to be used by persons (including children) with reduced physical, sensory or mental capabilities, or lack of experience and knowledge, unless they have been given supervision or instruction.

Children being supervised not to play with the appliance

The charger supplied with the ebike must only be used to charge the original battery (rechargeable Li-ion) supplied with the ebike.

Do not charge non rechargeable battery

Catalogue

S3 Brief Introduction	01
S3 Specifications	02
Products Diagram	03
Meter Function	04
Meter Operation	05
Unfold Steps	06
Assembly Steps	07
Folding Steps	08
Assembly Steps (Pedal parts)	09
Brake	10
Safety Usage	11-16
S3 Daily Maintenance	17-18
About Charging	19-20
Common Troubleshooting	21-22
After-sale Service	23

S3 Brief Introduction

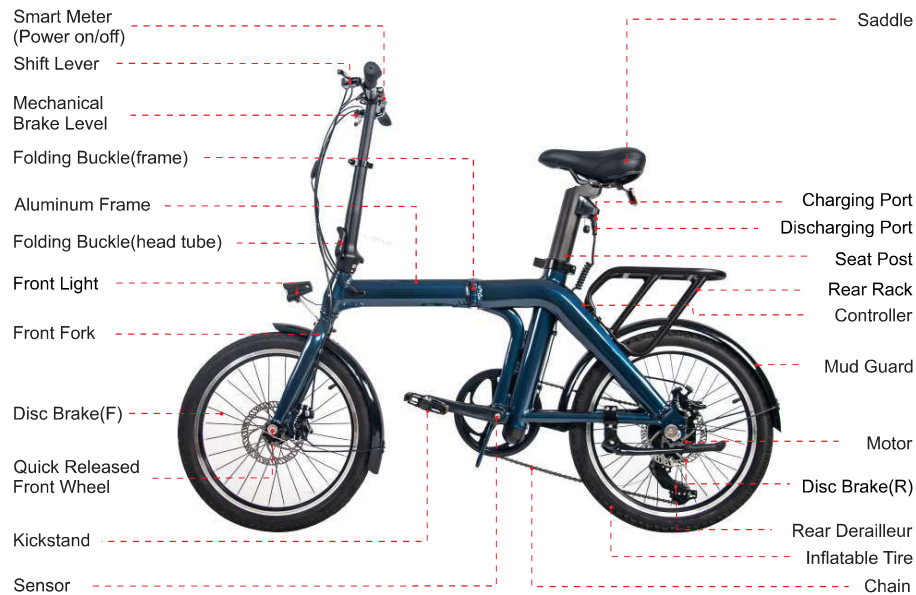
With the trends of IOT, AI and concept of low-carbon environmental protection, the modes of our transportation has been changing.

Combining industrial leading technology, modern innovative processes, we accomplished a top quality S3 e-bike. Pedal-Assisted Electric Bike is a new type of two-wheeled vehicle, using battery as a source of power and motor as power output assistance, is a new type of transportation that integrates human riding and motor assistance. We're dedicated to producing the intelligent, multifunctional, and fashion stylish products with compact design, bringing you a healthier, more fashionable transporter, and helping more riders enjoy a green and joyful trip.

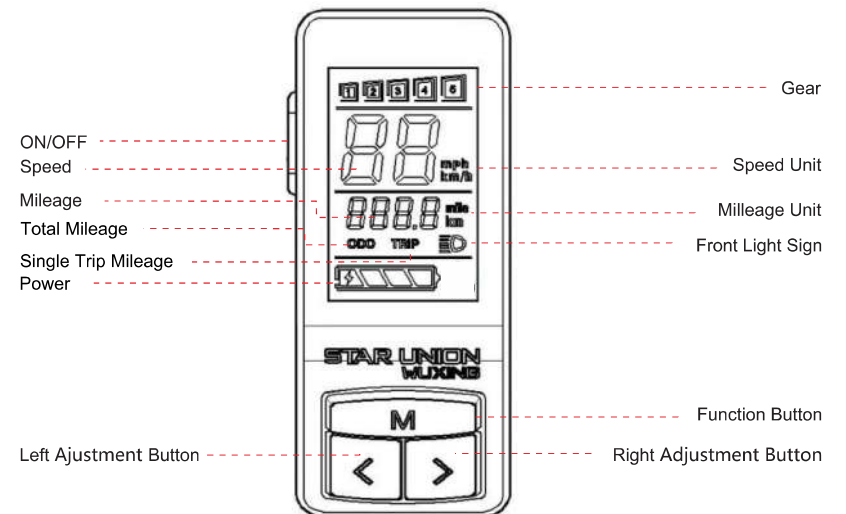
S3 Specifications

Item	Specifications
Nominal Voltage	36V
Battery	<input type="checkbox"/> 36V/10.4Ah <input type="checkbox"/> 36V/11.6Ah
Max Mileage	<input type="checkbox"/> Up to 40 km <input type="checkbox"/> Up to 50 km
Motor Power	250W
Motor Type	German technology high speed brushless gear motor
Battery Type	18650 Lithium battery
Charger	110-240V; 50-60Hz
Charging time	5 - 7 hrs
Frame Material	Aluminum 6061 - T6
Net Weight	19.9kg
Max Loading Weight	120kg
Max Rear Rack Weight	15kg
Controller Over-current protection	15A
Controller Under-voltage protection	31V
Type	20 inch inflatable tires
Controller power tube	6 tubes
Brake method	Mechanical disc brake(F&R)
Product Dimension	1477 x 600 x 1142mm
Package Dimension	880 x 450 x 660mm


Products Diagram



Meter Function



Meter Operation

■ Long press the power switch  , on / off the vehicle power. When turned on, the short press can realize the headlights on / off.

■ Press the keys "<" , ">" to choose power output mode. There are 6 gears to shift, shown as below:

■ "0" gear - 0% assist

Fitness mode: Motor power output 0%, suitable for sporting and exercising

■ "1" gear - 30% assist

Aerobic mode: Motor power output 30%, lower consumption, longer range, suitable for aerobic ride exercising.

■ "2" gear - 50% assist

Eco mode: Motor power output 50%-65%, moderate consumption, suitable for outdoor leisure or riding on flat road.

■ "4" gear - 80% assist

■ "5" gear - 100% assist

Climbing mode: Motor power output 80%-100%, suitable for slope climbing or fast trip.

■ Press the meter function key "M" to shift meter display, shown as below:

■ **TRIP** means single trip riding mileage(km)

■ **E00** (once press) : No malfunction

■ **ODO** (twice press) : Total riding mileage(km)



Unpack

► Two persons are recommended to assist in handling the assembling vehicle



Kindly Remind ① Please shut off the power when the bike is unused.

② Please charge the bike every 60 days if you do not use it, in case destroy the battery and make it unworkable.

Assembly Steps

1: Open the package and then unfold the bike as per following steps.



► Step 1: Separate the frame magnetic buckle, unfold the frame and lock the folding buckle.



► Step 2: Uplift the pole and lock the folding buckle of the pole.



► Step 3: Connect the discharging cable as above picture shows (ARROWS MUST BE AT OUTSIDE), adjust the height by open the seat post clamp, then lock it.

Folding Steps

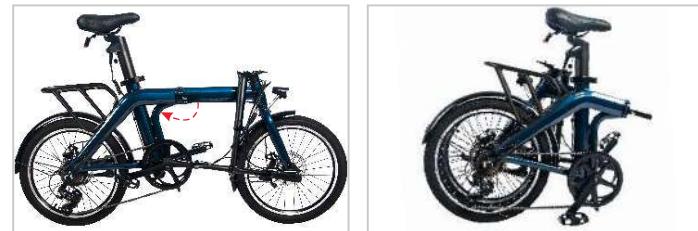
1: The folding method is shown as below:



► Step 1: Open the seat post clamp, put down the seat post and then lock the clamp.



► Step 2: Open the folding buckle of the pole, fold the pole down.



► Step 3: Open the frame fold clamp, fold the frame and lock the magnetic buckle.

Assemble Steps (pedal part)

1: Please use a spanner or other tools to install the pedal



Step 1: There is a left side pedal and a right side pedal, "L" means left side, and "R" means right side.



Step 2: Do as the picture shows, twist the corresponding pedal to parallel with the screw hole, then tighten the screw with a torque of 250kgf-cm.

Tips: Add some lubricating oil to the screw for easier tightening.



Step 3: Pedal assemble finished as the picture shows. Tighten the screw with a torque of 350kgf-cm.



Step 4: Tighten the screw of the motor with a torque of 400kgf-cm.

Brake



► Left brake handle, control the brake brake of the front wheel.



► Right brake handle, control the brake brake of the rear wheel.

2: The brake modulates



► Release the brake cable fastening screws.



► Adjust the brake bar rocker arm to hold the fastening screws in place.



► When adjusting the brake, the distance between the grip and the automatic rod is controlled at about 20mm, allowing the tire to be fully braking.



► When observed to wear to a third of the original thickness, replace the pad or the entire brake pump.

Safety Usage

Any riding tools are at risk of security, S3 is no exception, so you have to learn more about the product safety precautions, and pay attention to safety in the course of riding.

"Young children, pregnant women and any persons with vision, balance, impaired motor, mental skill or other problems should not use the pedelec. The pedelec should not be used for riding rough trails, damage may occur if used on off-road."

S3 is a stylish and portable tool of transport to meet the short-distance travel needs. In some countries and areas, riding a electric bike should obey the local laws and regulations.

For further details, please contact related departments, or our agent and after-sales team.

Charging instructions:

⚠ Use only the original charger. Model: FY-4202000

Charging method:

- Turn off the whole vehicle power supply;
- Connect the ac-end of the charger to the market power, and the charger green indicator light is on;
- Plug the charger into the battery charging seat, and the charger red indicator is on. When the indicator light turns green, the battery is full, remove the charger and plug into the box for next use.

Rear luggage rack:

- Fro this luggage rack, the maximum load of goods can not exceed 15kg, and can not be installed with child seats;
- Regularly check and maintain the luggage rack fastening screws;
- Do not modify the luggage privately;
- This rack can not be used for traction (hang);
- Goods over 15kg may cause rack damage or affect the safety of vehicle handling;
- Goods should be placed on the luggage rack, can not cover the rear reflector, the left and right sides should be balanced;
- Heavy goods shall be guaranteed with no belt or rope shape, so as not to get involved in the wheel and cause safety accidents;

Safety Warnings:

- Warning! Brakes will heat up in ride. Do not touch the brakes after use;
- Improper use of the frame and all mechanical parts can cause sudden breaks, which may cause injury to the rider. Any form of cracks or color changes in high-stress areas indicates that the parts have reached the design life and need to be replaced in time;
- The electrical circuit has a communication protocol. Random replacement of parts not provided by the company may cause the vehicle to fail to work properly. Changing the battery and voltage privately may cause partial damage to the electrical parts of the vehicle. Please do not try to modify it yourself;
- Changing the frame and structural parts without authorization will cause design stress changes, damage to the frame or structural parts, and cause safety accidents. Do not try to modify it privately;
- Any unauthorized modification that leads to vehicle damage and safety accidents has nothing to do with our company;
- When the car is running normally, the noise is less than 70Db;
- Can not be used in crowded or crowded areas;
- In any case should pay attention to their own and others' safety;
- Do not use the product but for riding;
- Electric bicycle can not be modified;
- Do not allow hands, feet, hair, body parts, or other similar parts to touch the rotation parts, such as wheels, rotating systems and motors while riding;
- Please avoid sharp collision, water pavement and uneven road;
- Electric system specifications and services should refer to the operating instructions;
- It is recommended not to ride in the dark places at night;
- It is recommended that the user check the restricted use of road safety in accordance with the regulations;
- It is recommended to ride on flat, hard, dry and clean cement or asphalt roads;
- Please avoid riding on water, sand, gravel, debris pavement and rain weather which affects the brakes and visibility;
- Before riding, you must wear helmets, gloves, elbow pad, kneecap and other safety equipment to prevent accidents;
- Check the vehicle: Before riding you need to check whether the power is sufficient, whether the bike is abnormal or loose;
- It is forbidden to ride on wet roads, especially snow and water,
- It is recommended not to climb more than 15 degree up and down ramp.
- It is recommended not to climb more than 15 degree up and down ramp;
- Users should keep checking the brake performance, pay attention to lengthen the braking distance in downhill, rain and snow;
- Please try to avoid rapid acceleration or deceleration, prohibit excessive forward and backward body or speeding;
- When the remaining power is insufficient, please keep a low speed ride, and charge the bike as soon as possible;
- Once a risk of falling, please mainly protect personal safety, adhere "human safety priority" principle;
- Do not put your hands in your pocket while riding, in case of danger or sudden situation;
- Take initiation to understand and comply with local traffic laws and regulations while riding S3 , civilized riding, pay attention to the surrounding people and objects, so as to avoid collision;
- Ride the bike under a controlled safe speed to their own and passerby;
- Respect the right of way for other pedestrians, do not frighten them, especially kids; slow down and remind pedestrians while riding behind them;

- Keep safe distance while there are other riders on the way, do not ride side by side unless there is enough space for pedestrians to go through;
- Do not ride in poor light places. If you have to, please slow down and pay more attention;
- Please avoid riding backwards, it's dangerous. It can only be accepted to ride a few steps to keep away from sudden block;
- Check wear of brake pads and fastening screws and nuts for loosening.

Active safety protection measures

- Before using, make sure that all locking parts are locked in place;
(Follow the instructions to install, to avoid causing injury.)
- Check the fixing of all screws before use to avoid self-locking nuts or other fixed parts loose;
- Inflate the tire appropriately, and make sure there is enough anti-skid tread;
- Check the axle protective cover and other protective equipment are accurate or not;
- Electric bike chain might loose after riding a period of time, and adjust methods as follows:
Loosen the nuts on both sides of the rear axle and tighten the chain nut until the chain is tight, and pay attention to the rear wheel horizontally paralleled with the frame, and then tighten nuts on both sides. If the chain is tight, repeat the operation as above(Chain sagging 10mm-15mm).
- When adjusting the height of the saddle, making sure that the safety line on the saddle should not be exposed. Lock the seat tube clamp. And tighten the nut.

Name of clamp bolts	Standard torque /N.m
Bolt for handlebar	Quick release
Handle bar stem and fork clamp bolt	10-12 N.M
Sunflower fixing bolt	4-6 N.M
Saddle	14-16 N.M
Seat post	Quick release
Front wheel	Quick release
Rear wheel	40-45 N.M
Rack	10-12 N.M

- Before riding, please follow preparations and inspections required by manufacturer:
 - Wearing helmet, kneecap, gloves, elbow pad and other protective equipment
 - Suitable place for safe cycling and operation
 - Function operation well of brake system
 - Right position for the safety identification and easily understood mark
- Do not let others use your S3 unless the person has read the manual carefully;
- Please do a good job of safety during driving, no matter when you ride, please wear approved, helmet in line with the first type which contains a cap and can protect the back of the head. At the same time wearing gloves, eye protection equipment, elbow pads and other protective equipment;
- Do not ride when you are not on condition or unable to comply with the instructions and warnings of the manual;
- Do not ride on the influence of alcohol or medicine;
- Please get off in time in the cases of less power, continuous alarm and speed reduced, and charge timely to ensure safety;
- Please check before riding, do not ride before troubleshooting of any loose or damaged.

S3 Daily Maintaining

Daily lubricating maintaining (see below table)

Lubricating position	Lubricating period	Recommended oil for Lubricating
Front fork set	1 year	Lubricating grease
Front/rear axle	1 year	Lubricating grease
Bottom Bracket	1 year	Lubricating grease
Pedal axle	1 year	Lubricating grease
Chain wheel	1 week	Lubricating oil
Chain	1 week	Lubricating oil
Freewheel interior	1 month	Lubricating oil
Brake lever	1 month	Lubricating oil

- The tire pressure shall not exceed the maximum indicated on tires.;
- Use the original factory allowed replacements, and ask local distributor or professional technicians to install;
- Replace the tires when the tires are damaged or worn seriously.

Daily cleaning

- If surface of S3 stains , use soft cloth dipped with some water and wipe it . If the stain is hard to clean, smear toothpaste on and use toothbrush to scrub repeatedly, then clean it again with wet cloth;
- ⚠ Notice :Do not use alcohol, petrol, kerosene or other corrosive, volatile chemical solvents to clean the bike.Or it will damage the appearance and internal structure. Do not use a water gun with pressure to rinse. While cleaning, make sure S3 e-bike is powered off, cable is unplugged and charging port is covered, in case of electric shock or serious failure.
- Please store the S3 e-bike in dry and cool indoor places when not used, and do not leave it out of doors for long time;
- To avoid the brake system failure , please do not add the oil to the brake pads.

Maintaining for battery of S3 e-bike

- Advised temperature for storing the battery : -20°C-50°C, otherwise the battery may fail or overheating, even causing fire;
- The failure can not be restored. The battery has a intelligent board inside can record the charge and discharge status. It can not be recharged if damaged by long time no-charged, which can not get free warranty service. (Notice: Prohibit non-professional personnel to disassemble the battery pack. Otherwise it may cause serious security incident when happening electric shock or short circuit!)

About charging

- The red light of charger will light up when connecting the input and output of charger.
- Standard charging time: According to charge in prescript time by specified supporting charger.
Surrounding temperature is around 25°C, lithium battery for 6-7 hours.
- Charging in summer, the charged time should be 5-6 hours. Please stop charging when the temperature of battery is more than 40°C. Continue to charge, after the temperature drops.
- The charger has over-current protected device, charging in long time (Generally no more than 18 hours of charging will not affect the life of battery and charger.)

Low battery flash

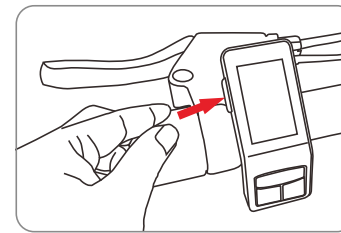
The battery capacity viewing area have five(5) segments. Each segment represent 20% battery capacity. When the capacity is full, the five segments are all light up. If the battery capacity is low, the battery viewing will flash, which indicates that the battery is severely insufficient and need to be recharged immediately.

Charging Your Battery:

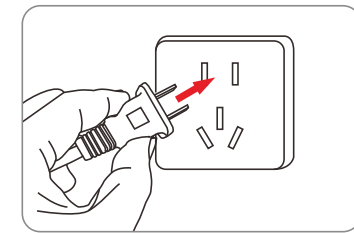
Fully charge your battery before your first ride and then after any operation, especially after long distance riding.

1. Shut down the power at the side of display to make sure charging safety.
2. Then, battery socket of the charger is inserted into an electrical connector

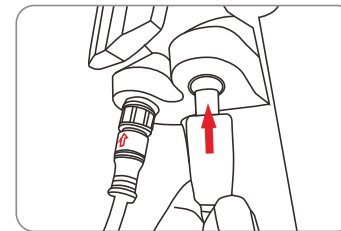
* Use only the original charger. Model: FY-4202000



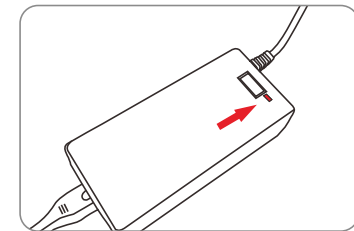
(1)



(2)



(3)



(4)

3. Plug the adapter to the connection of charging port which at the bottom of seat.
4. Checking the operation of charging adapter, the "Red color light" means on charging.

Notice:

During charging, please do not use motor system for the avoidance of accidents.

Connect the commercial power

Charge

Charging temperature: 5-45°C

Discharging temperature: -20-60°C

Notes of signal light: if the charger is connected to the commercial power, green light flickers or is normally on in the case

of no battery; in the case of battery connection, red light normally on indicates that the bicycle is being charged while the

green light normally on indicates charging completed.

Common troubleshooting

Users can do self-checking and troubleshooting when experiencing below situations .

Fault phenomenon	Fault judgment	Troubleshooting
The power indicator on meter flashes	The voltage of the battery is in an undervoltage condition	Charge the bike immediately
Abnormal sound from the bike	Screws may be loose on some parts	Fasten every screw
	Abrasion between unfixed and fixed parts	Check if the corresponding part is shifted then adjusted it
The pedals are turning when riding	Flywheel may damaged or with oil on	Lubricating it after cleaning
	The chain is too tight	Moderately adjust the tightness of the chain
It feels toilsome while pedaling	The brake system is locked or rubbed against	Adjust the brake system
	The air pressure of tires is not enough	Inflate the tire
	The transmission parts are not flexible when lack of oil	Check and add oil
	The bottom bracket pedal part is not flexible enough or the chain is too tight	Check the corresponding part and add oil or adjust the tightness of chain
The battery can not be charged	The charging socket may fall off or with poor connected	Replace the socket or check the connection
	Battery connection may fall off or with poor connected	Check the battery connection
Max mileage reduced after once charging	Tire pressure is not enough	Inflate the tire
	Charging is not full	Recharging
	The battery is aging	Inspect the battery
	Transmission parts are not flexible	Change the bearing or add lubricating oil

Fault phenomenon	Fault judgment	Troubleshooting
Max mileage reduced after once charging	The brake system is locked or rubbed against, or the chain is too tight or lack of oil	Adjust brake lever or add oil on chain
	Riding roads with many uphill or ride against wind, or with frequently braking and starting	Recommended to avoid this operation
The crank is spinning or loosing	Too much oil on the freewheel	Clean the freewheel
	Freewheel rolling bearing is too tight	Adjust the bearing of the freewheel
The saddle is up and down or shifting	The saddle is clamped or nut is loosed	Adjust or tighten the saddle , tighten the screw nut .
	The screw/nut under the saddle is loose	Adjust the saddle, tighten the screw/nut if loose.
The front wheel is shifting or shaking	The screw nut is loose on front axle	Tighten the nut on front axle
	Collision for handlebar and front fork, bolt is loose inside the handlebar	Tighten the bolt
	Front fork stem or fork leg is loose	Adjust the front stem or fork leg

MOBOT PTE. LTD.
 62 Ubi Road 1 Oxley Bizhub 2 #03-23
 Singapore 408734
 Tel: +65 6538 8216
 Email: info@mobot.sg
 Website: www.mobot.sg
 Co reg: 200717700W